

Metal Pipe Boot

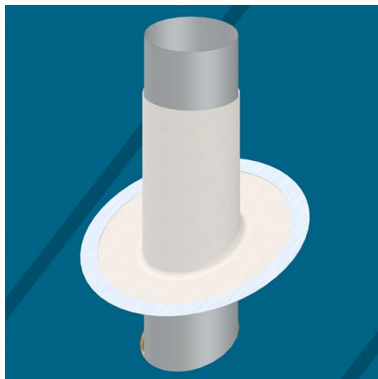
Product Data Sheet



METAL PIPE BOOT

Installation

1. Limitations
 - a. Do not use on membrane roofing systems. Use on metal roofing systems only.
 - b. Do not install over metal roof ribs.
 - c. Do not use if more than 75% of the metal roof panel is encompassed.
 - d. Do not use on pipes that exceed temperatures of 120° F (48° C).
2. Slide a correctly sized Metal Pipe Boot over an existing pipe.



Product Description

Metal Pipe Boots give a watertight seal around pipe penetrations that protrude through a metal roof. A metal ring is back-sealed and fastened to the metal roof, while a PVC boot flashes around the pipe.

Metal Pipe Boots are comprised of a vinyl-coated aluminum ring factory welded to a custom-fabricated PVC boot.

Ordering

Metal Pipe Boots are ordered individually.

- 2-Inch Charcoal (Item #5600)
- 4-Inch Charcoal (Item #5601)
- 6-Inch Charcoal (Item #5602)
- 8-Inch Charcoal (Item #5603)
- Custom Angled (22°) Charcoal (Item #5604)

Storage and Handling

- Always store in a dry location protected from the elements.

Precautions

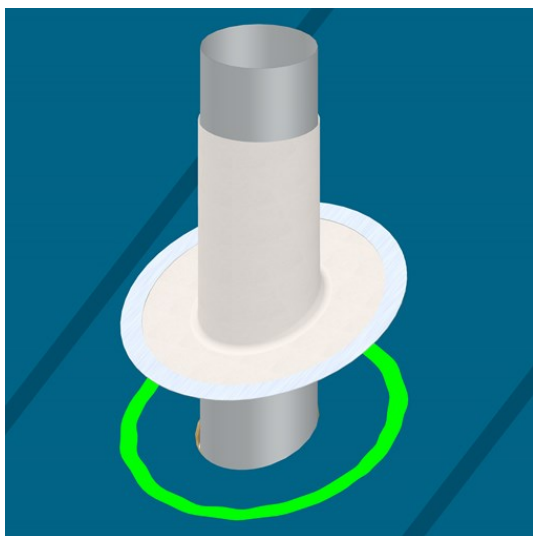
- Wear proper personal protective equipment, such as gloves and eye protection.

For more information give us a call
or visit our website today.

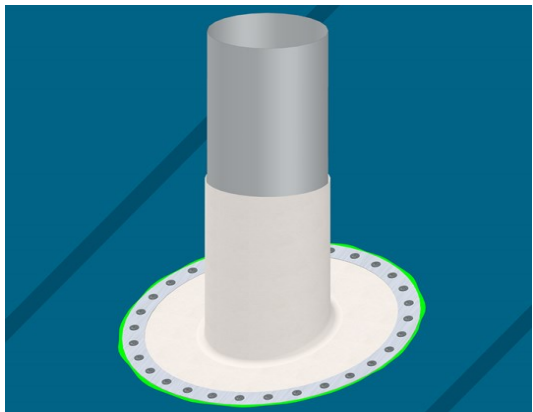
800-248-0280 • exceptionalmetals.com



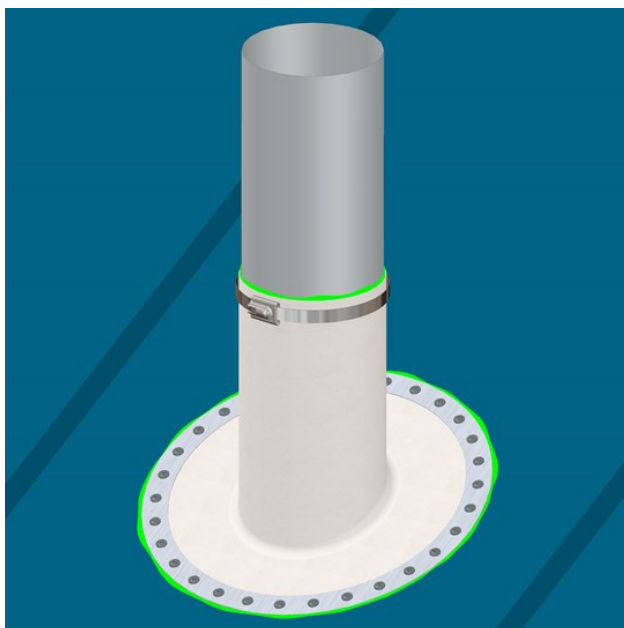
3. While pressing the metal ring firmly to the roof, trace an outline around the metal ring with a pen or marker.
4. Lift the Metal Pipe Boot to apply approved sealant. Apply a bead of approved sealant within the traced outline.



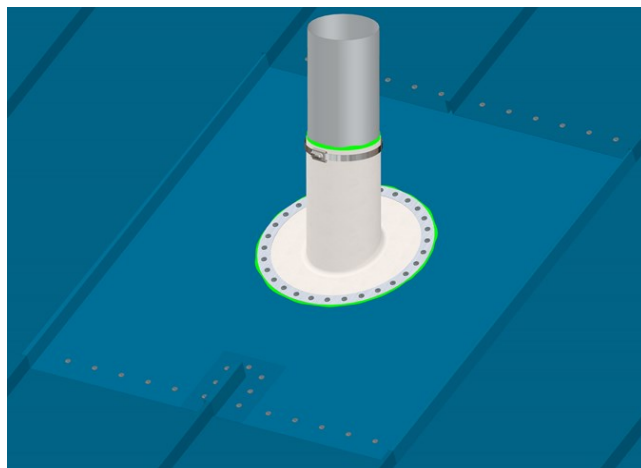
5. Press the Metal Pipe Boot into the approved sealant. Fasten two grommeted 7/8-inch stainless steel screws at opposite sides of the metal ring. Rotating around the metal ring on each side, fasten the remaining screws at no greater than 1 inch apart.
6. Apply a bead of approved sealant around the edge of the metal ring.



7. Apply a bead of approved sealant between the PVC boot and pipe. Secure a stainless steel band within 1/4 inch of the top of the PVC boot. Finish with a bead of approved sealant at the top of the PVC boot.



8. If a pipe protrudes through a metal roof rib – Metal Pipe Boots must not be installed over metal roof ribs. Cut out the metal roof ribs and install a metal roof target patch as per the metal roof manufacturer's installation specifications. Install the Metal Pipe Boot as per the instructions above.



For more information give us a call
or visit our website today.

800-248-0280 • exceptionalmetals.com