



All-Term™

Product Data Sheet

Product Description

The All-Term system may be used as a perimeter flashing for single-ply roofing systems. The system consists of a base and a snap-on metal cover.

- Base and cover are fabricated in 10' lengths; 4" – 13" widths.
- Ready-to-assemble inside and outside corners.
- Not sensitive to mil thickness.
- LEED® compliant.

Installation

1. A wood nailer is required if 1" or greater of insulation is used.
2. This nailer should be attached to the wall in accordance with ANSI/SPRI ES-1 3.9.
3. Install in accordance with EXCEPTIONAL Metals' Detail #3580.
4. Any deviation from the requirements set forth in detail drawings must be pre-approved, in writing, by the EXCEPTIONAL Metals' Technical Department.

Codes and Standards

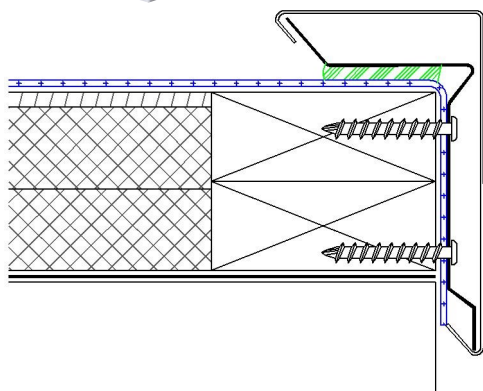
- ANSI/SPRI ES-1 Compliant with 4" – 13" base and cover.

Warranty

- EXCEPTIONAL Metals offers a finish and substrate warranty. Contact the membrane manufacturer for any additional warranty that may be offered.

Technical Services

- Product samples, detail sheets, color chips and color chart are available for your submittal package. For assistance with questions or submittals, contact your local representative or call EXCEPTIONAL Metals.



Base		
Material	Gauge	Finish
Aluminum	.050	N/A
Galvalume® Plus	22 gauge	N/A
Cover		
Material	Gauge	Finish
Aluminum	.040	Mill or Kynar®
Stainless Steel	24 gauge	N/A
Bonderized Steel	24 gauge	N/A
Galvalume	24 gauge	Mill or Kynar

For more information give us a call
or visit our website today.

800-248-0280 • exceptionalmetals.com