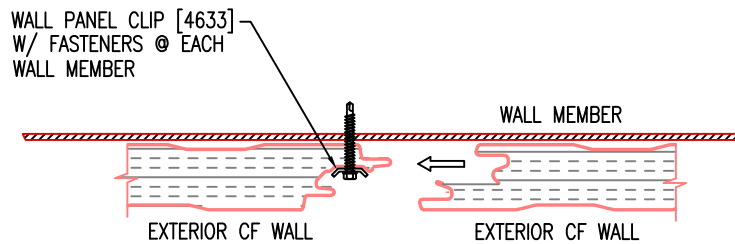
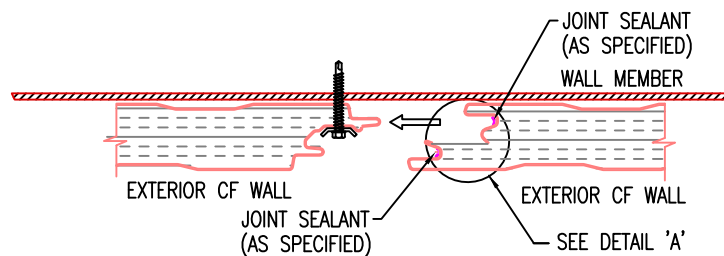




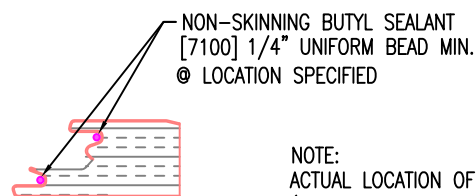
EXCEPTIONAL[®] Metals



STEP 1 CLIP AND FASTENER ASSEMBLY

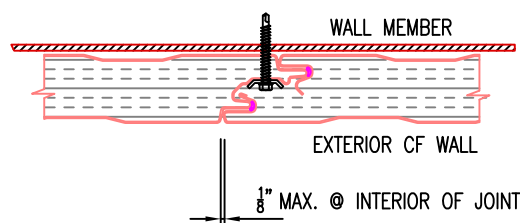


STEP 2 JOINT SEALANT APPLICATION



DETAIL 'A'

NOTE:
ACTUAL LOCATION OF THE SIDE LAP VAPOR SEALANT
(INTERIOR JOINT OR EXTERIOR JOINT) MUST BE
DETERMINED BY THE MECHANICAL ENGINEER AND OR
ARCHITECT OF RECORD



STEP 3 INSULATED CONCEALED FASTENER METAL WALL PANEL SIDE LAP

REVISED:	07/24/2018	INSULATED METAL WALL PANELS
AUTHOR	BVANOCHT	EM CF ARCHITECTURAL
SCALE:	NONE	WALL PANEL SIDE LAP