

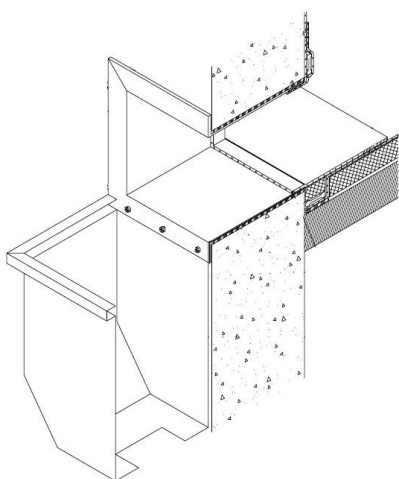


# Conductor Head

## Product Data Sheet



*Shown with metal  
flange scupper*



### Product Description

The Conductor Head is designed to attach to the wall below the scupper, leaving the scupper visible from the ground. It complements the roof design and directs rain water into downspouts.

- Standard designed conductors have the same appearance as the vinyl-back collector.
- Commonly ordered with a metal flange scupper, producing an attractive combination.

### Installation

1. Install in accordance with EXCEPTIONAL® Metals' Detail #2071.
2. Any deviation from the requirements set forth in detail drawings must be pre-approved, in writing, by the EXCEPTIONAL Metals' Technical Department.

### Warranty

EXCEPTIONAL Metals offers a finish and substrate warranty. Contact the membrane manufacturer for any additional warranty that may be offered.

### Installation

Product samples, detail sheets, color chips, and color chart are available for your submittal package. For assistance with questions or submittals, contact your local representative or call EXCEPTIONAL Metals.

Material	Gauge	Finish
Aluminum	.040	Mill or Kynar®
Stainless Steel	24-gauge	N/A
Bonderized Steel	24-gauge	N/A
Galvalume®	24-gauge	Mill or Kynar®
Copper	16 oz.	Mill

For more information give us a call  
or visit our website today.

800-248-0280 • [exceptionalmetals.com](http://exceptionalmetals.com)