



# Snap-On Fascia Base

## Product Data Sheet

### Product Description

The Fascia Base functions as a cleat to be used with the 2-Piece Snap-On Cover. Fascia Base may be used on eaves to allow water to flow over the roof edge termination.

### Features

- Fabricated in 10' lengths and 3" – 8" widths.
- Used with 2-Piece Snap-On Compression Cover.
- Manufactured from 24-gauge Galvalume® and 24-gauge stainless steel.

### Installation

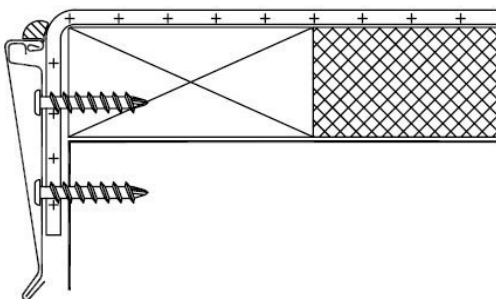
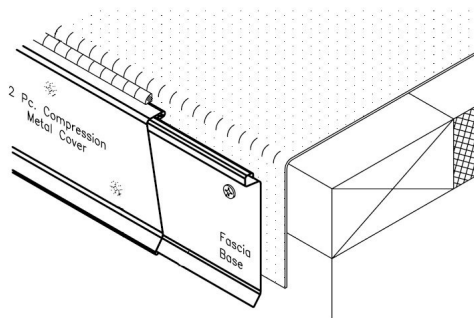
1. A wood nailer is required if 1" or greater of insulation is used.
2. This nailer should be attached to the wall in accordance with ANSI/SPRI ES-1.
3. Install in accordance with EXCEPTIONAL® Metals Detail #3560.
4. Any deviation from the requirements set forth in detail drawings must be pre-approved, in writing, by the EXCEPTIONAL Metals Technical Department.

### Warranty

EXCEPTIONAL Metals offers a finish and substrate warranty. Contact the membrane manufacturer for any additional warranty that may be offered.



*Fascia Base shown with 2-Piece Snap-On Compression Cover.- See 2-Piece Snap-On Compression Cover PDS for material gauge and finishes.*



For more information give us a call  
or visit our website today.

800-248-0280 • [exceptionalmetals.com](http://exceptionalmetals.com)