



2-Piece Snap-On Compression LG

Product Data Sheet

Product Description

The 2-Piece Snap-On Compression LG (Large Face) system may be used as a perimeter flashing for single-ply roofing systems. The system consists of a 22-gauge Galvalume® base and a snap-on aluminum cover.

Features

- Base and cover is fabricated in 10' lengths and 9" – 13" widths.
- Cover is double-hemmed to prevent roof material from excessive wear.
- Bird beak strengthening bend on base.
- Pre-punched holes in base.
- Ready to assemble inside and outside corners are available.
- LEED® compliant.

Installation

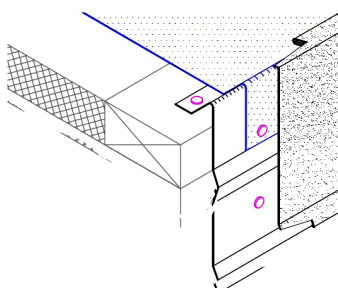
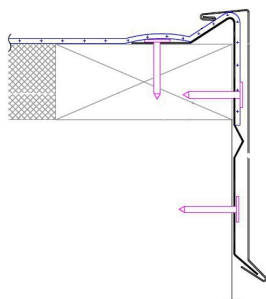
1. A wood nailer is required if 1" or greater of insulation is used.
2. This nailer should be attached to the wall in accordance with ANSI/SPRI ES-1.
3. Install in accordance with EXCEPTIONAL® Metals' Detail #3115.
4. Any deviation from the requirements set forth in detail drawings must be pre-approved, in writing, by the EXCEPTIONAL® Metals' Technical Department.

Codes and Standards

- ANSI/SPRI ES-1 compliant.

Warranty

EXCEPTIONAL Metals offers a finish and substrate warranty. Contact the membrane manufacturer for any additional warranty that may be offered.



Material	Gauge	Finish
Aluminum	.040	Mill or Kynar®

For more information give us a call
or visit our website today.

800-248-0280 • exceptionalmetals.com