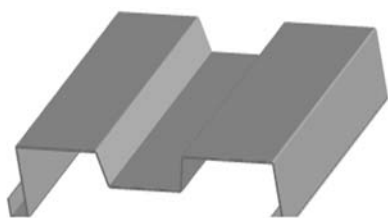


EM ShadowRib™



DESCRIPTION:

EM ShadowRib™ is a 3" deep panel that combines aesthetics, economy and function to bring definition to metal structures. EM ShadowRib™ is a proven performer and a versatile tool to the designer. Structural strength in the EM ShadowRib™ panel is accomplished without sacrificing appearance or design flexibility. The fluted face creates distinctive shadow lines.

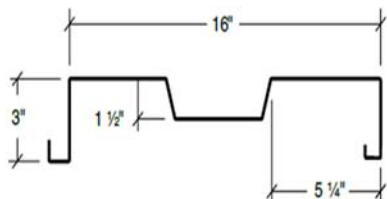


FEATURES AND BENEFITS

- Panels may be secured to the structure from the outside of the building with the EM ShadowRib™ concealed clip or from inside the building with an expansion fastener. Both are positive fastened methods that create a secure interlock between panel and structure.
- The EM ShadowRib™ panel can be used for walls, fascias, and equipment screens. Apply the panel over light-gauge framing, purlins, girts, structural steel and joists.
- EM ShadowRib™ carries Florida approval

PRODUCT SPECIFICATIONS

- Applications: Wall
- Coverage Widths: 16"
- Panel Attachment: Concealed fastening system outside panel attachment—EM ShadowRib™ Panel Clip
- Gauges: 24 (standard); 22 (optional)
- Finishes: Smooth (standard); embossed (optional)
- Coatings: Galvalume® Plus, Signature® 200, Signature® 300, Signature® 300 Metallic



CATEGORY	CHARACTERISTIC	TEST METHOD	PURPOSE	RESULT
STRUCTURAL	Negative Wind Loads	ASTM E 1592	Provides a standard procedure to evaluate or confirm structural performance under uniform static air pressure difference	See Load Table Section*
	Positive Wind Load	AISI S100	North American Specification for the Design of Cold-Formed Steel Structural Members	See Section Properties and Allowable Load Table Section*
ROOF LISTINGS	Roof Performance-Florida Approval	ASTM E 1592	Florida product approval is the approval of products and systems, which comprise the building envelope and structural requirements of the Florida Building Code	See FL #11917.5

*Additional data sheets and load charts available at www.exceptionalmetals.com.