

### RADIUSED SIDEWALL FLASHING WITH J - CLEAT

DETAIL NO.

**EXM-SW-4**

MATERIAL : STEEL/ALUMINUM

ACCEPTABLE SYSTEMS: DefendEX SS1500, DefendEX SS2000, DefendEX SL1500, DefendEX SL1750

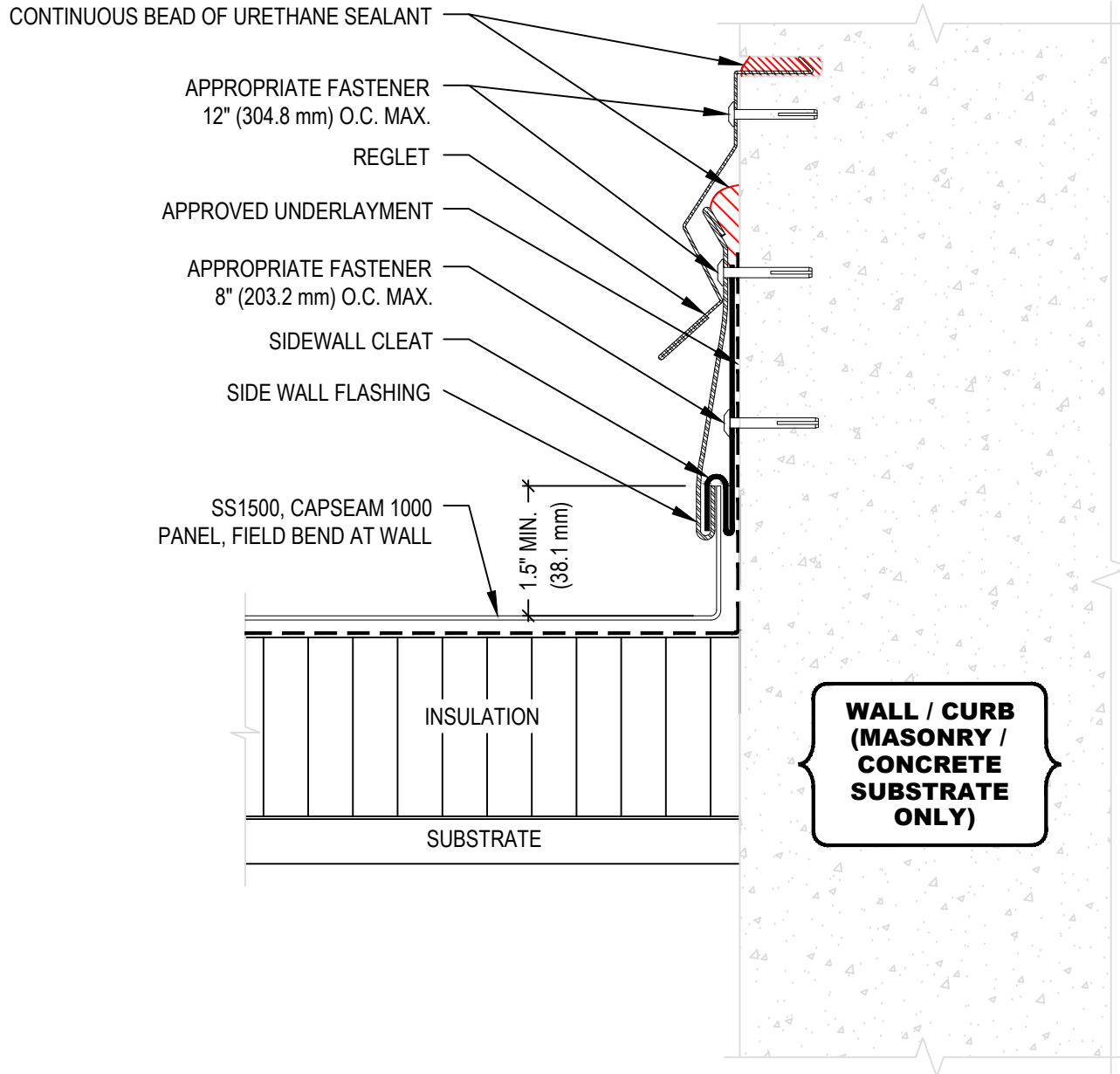
ISSUE / REVISION DATE:

(866) 337-4599 www.exceptionalmetals.com

MAXIMUM WARRANTY: 20 YEARS

**02/09/2026**

NOT TO SCALE



**NOTE:**

1. REFER TO THE EXCEPTIONAL METALS WEBSITE FOR MOST CURRENT INFORMATION.
2. REFER TO TECHNICAL INFORMATION SHEETS FOR FASCIA SIZES, ACCESSORIES, AND FINISHES AVAILABLE.
3. REFER TO THE EXCEPTIONAL METALS WEBSITE FOR FASTENER COMPATIBILITY WITH METAL.
4. SIDEWALL FLASHING AND VERTICAL LEG OF PANEL MUST ENGAGE THE FULL LENGTH OF THE J-CLEAT.

**THIS DETAIL APPLIES TO ALL WARRANTED DEFENDEX ROOF SYSTEMS (SS1500, SS2000, SL1500, SL1750)**

**MASONRY AND CONCRETE WALLS / CURBS MUST BE WATERPROOFED AND MAINTAINED IN ORDER FOR ANY SURFACE MOUNTED TERMINATION TO BE EFFECTIVE.**

**WALL / CURB (MASONRY / CONCRETE SUBSTRATE ONLY)**

FOR WARRANTY PERIODS GREATER THAN 20 YEARS REFER TO METAL QUICK SPECS FOR MINIMUM REQUIREMENTS.