

**SIDEWALL FLASHING WITH MODIFIED J - CHANNEL AT REGLET**

DETAIL NO.

**EXM-SW-1**

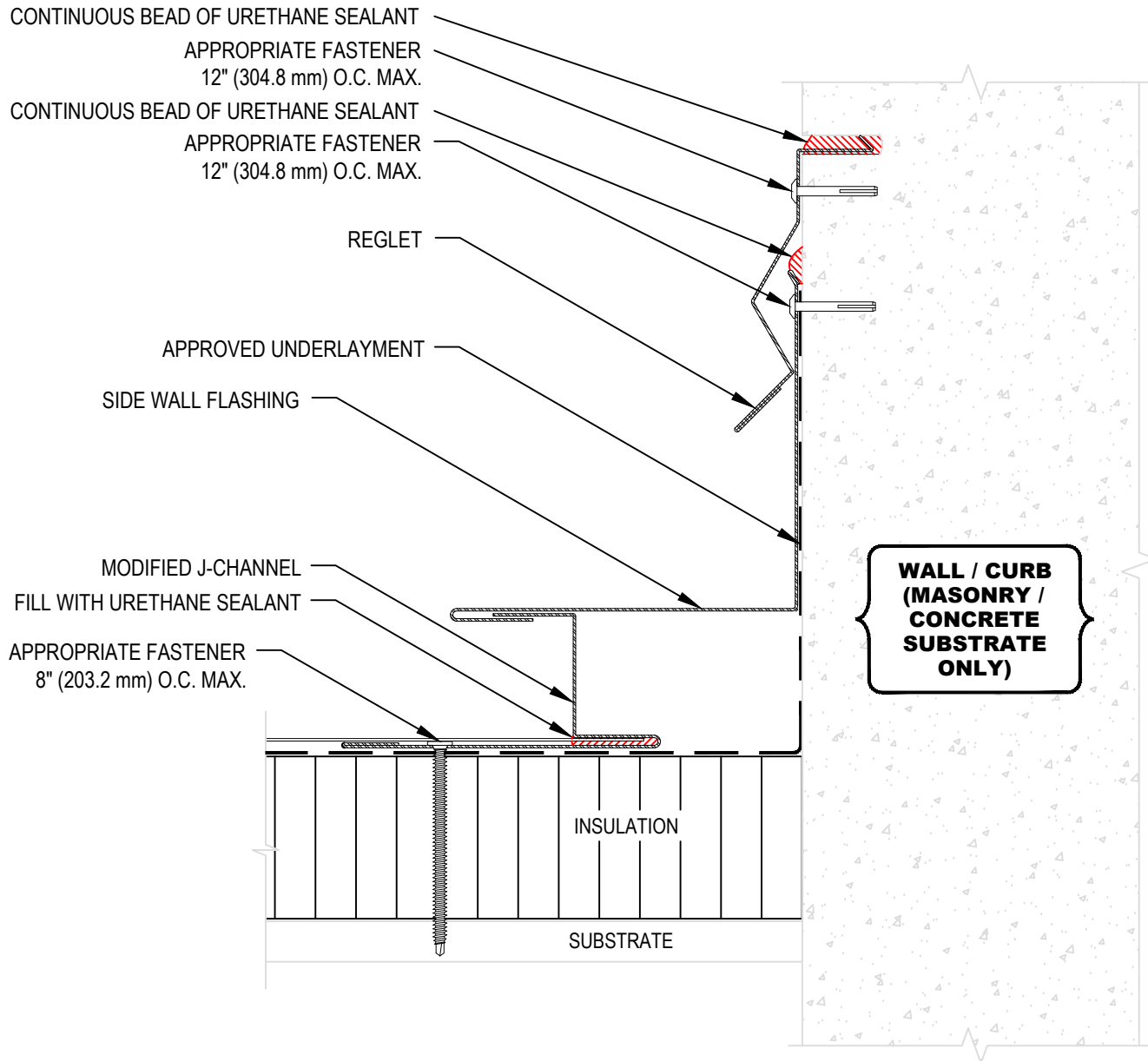
MATERIAL : STEEL/ALUMINUM  
(866) 337-4599

ACCEPTABLE SYSTEMS: DefendEX SS1500, DefendEX SS2000, DefendEX SL1500, DefendEX SL1750  
www.exceptionalmetals.com

ISSUE / REVISION DATE:  
**02/09/2026**

MAXIMUM WARRANTY: 20 YEARS

NOT TO SCALE



**NOTE:**

1. REFER TO THE EXCEPTIONAL METALS WEBSITE FOR MOST CURRENT INFORMATION.
2. REFER TO TECHNICAL INFORMATION SHEETS FOR FASCIA SIZES, ACCESSORIES, AND FINISHES AVAILABLE.
3. REFER TO THE EXCEPTIONAL METALS WEBSITE FOR FASTENER COMPATIBILITY WITH METAL.
4. APPLICATION DETAILS ARE FOR ILLUSTRATION PURPOSES ONLY AND MAY NOT BE APPROPRIATE FOR ALL BUILDING DESIGNS AND CONDITIONS.

**THIS DETAIL APPLIES TO ALL WARRANTED DEFENDEX ROOF SYSTEMS (SS1500, SS2000, SL1500, SL1750)**

**MASONRY AND CONCRETE WALLS / CURBS MUST BE WATERPROOFED AND MAINTAINED IN ORDER FOR ANY SURFACE MOUNTED TERMINATION TO BE EFFECTIVE.**

FOR WARRANTY PERIODS GREATER THAN 20 YEARS REFER TO METAL QUICK SPECS FOR MINIMUM REQUIREMENTS.