

RADIUSED RAKE WITH HEMMED PANEL EDGE

DETAIL NO.

EXM-RK-4

MATERIAL : STEEL/ALUMINUM

ACCEPTABLE SYSTEMS: DefendEX SS1500, DefendEX SL1500

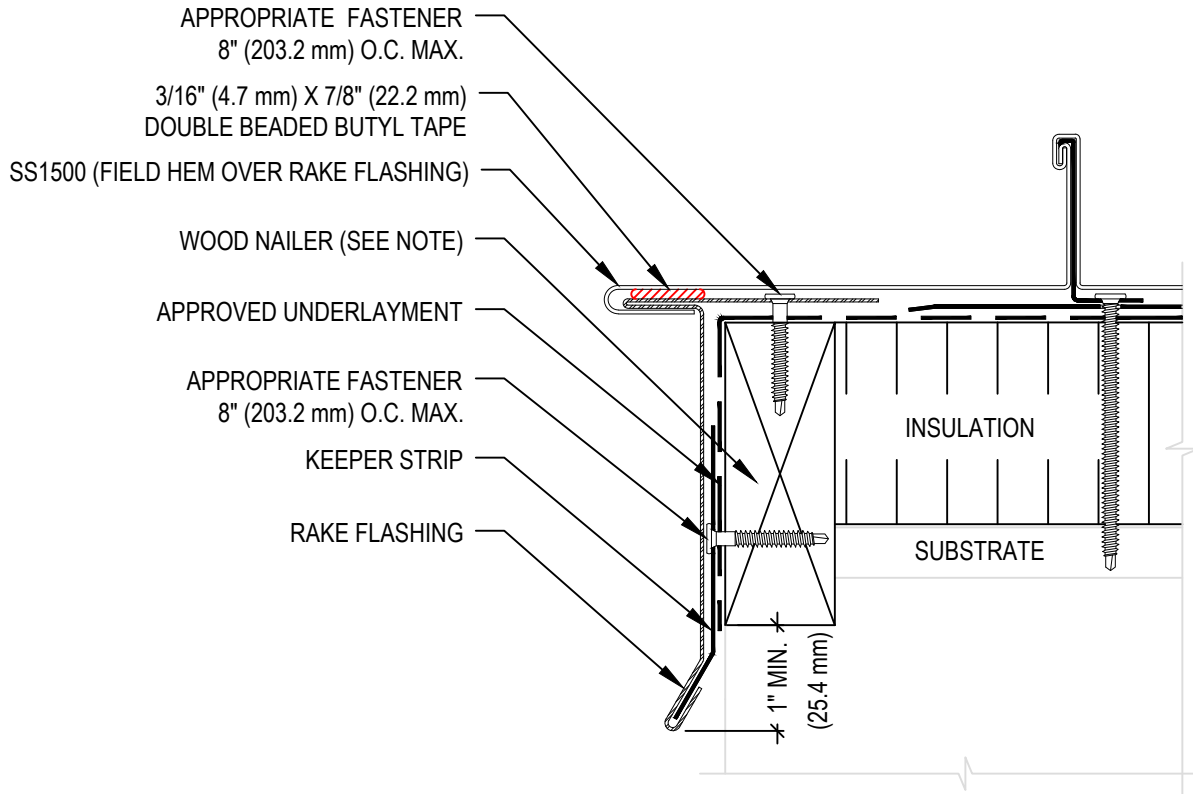
ISSUE / REVISION DATE:

(866) 337-4599 www.exceptionalmetals.com

MAXIMUM WARRANTY: 20 YEARS

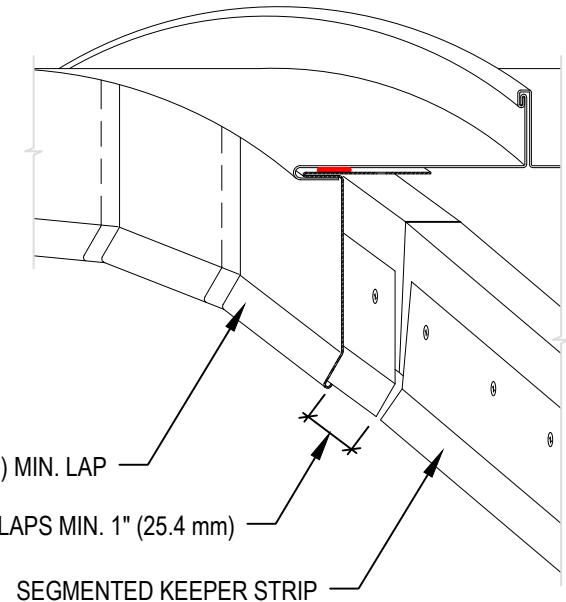
02/09/2026

NOT TO SCALE



NOTE:

1. REFER TO THE EXCEPTIONAL METALS WEBSITE FOR MOST CURRENT INFORMATION.
2. REFER TO TECHNICAL INFORMATION SHEETS FOR FASCIA SIZES, ACCESSORIES, AND FINISHES AVAILABLE.
3. WOOD NAILER MUST BE INSTALLED TO MEET APPLICABLE BUILDING CODES OR 200 LB PER LINEAR FOOT MINIMUM IN ANY GIVEN DIRECTION.
4. REFER TO THE EXCEPTIONAL METALS WEBSITE FOR FASTENER COMPATIBILITY WITH METAL.



THIS DETAIL APPLIES TO SS1500 AND SL1500

FOR WARRANTY PERIODS GREATER THAN 20 YEARS REFER TO METAL QUICK SPECS FOR MINIMUM REQUIREMENTS.